

Evacuation Assembly Area

Parking

Parking

ED SACKFIELD ARENA

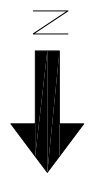
FIRE DEPT. ACCESS ROUTE

FIRE DEPT. ACCESS ROUTE

FIRE DEPT. ACCESS ROUTE

FIRE DEPT. ACCESS ROUTE

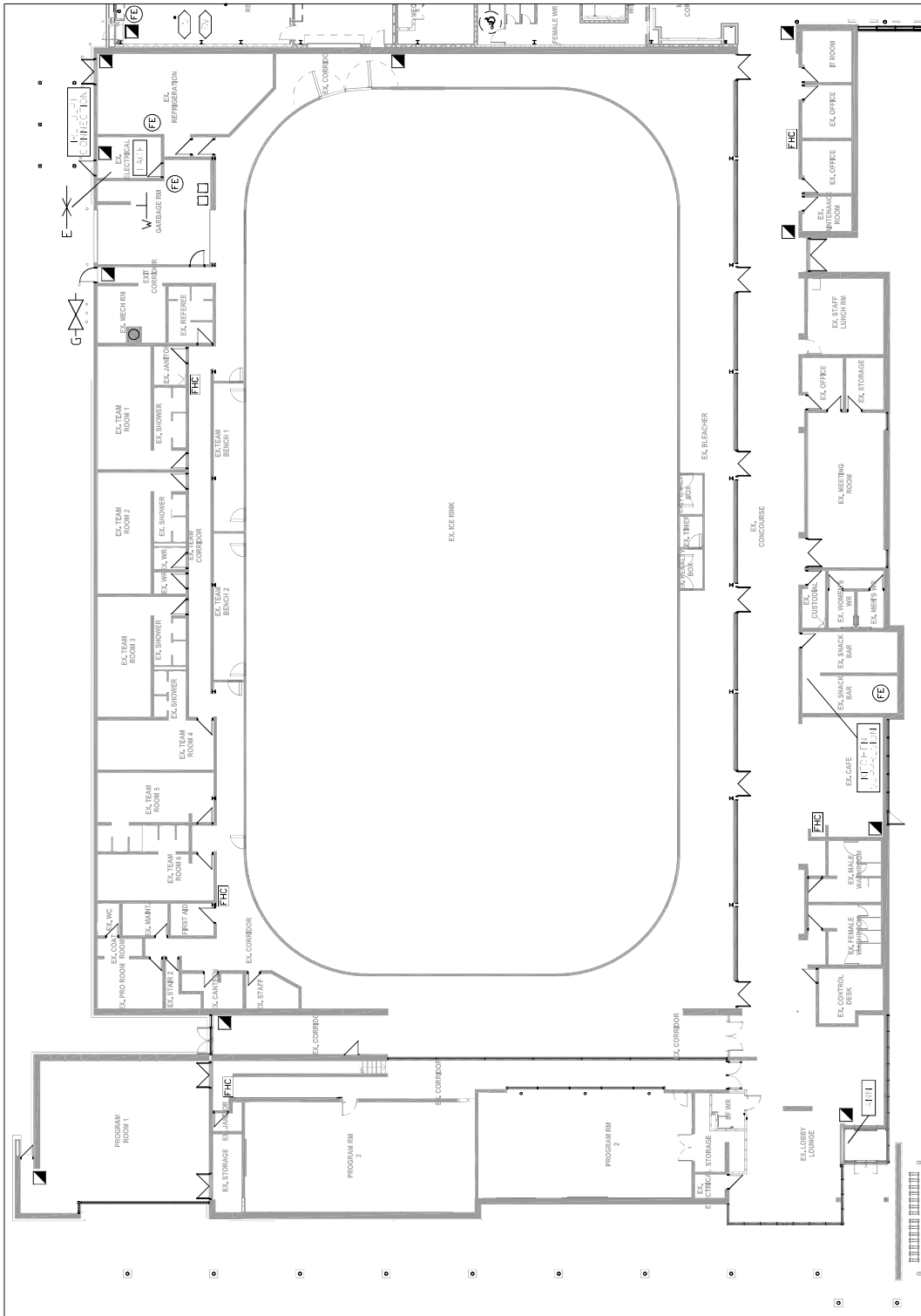
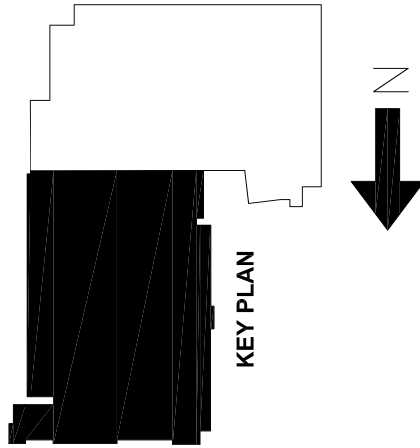
LEGEND	
G-X	gas main shut-off
⊕	fire hydrant
FDC	fire department connection
▲	building access point



# FIRE SAFETY PLAN SCHEMATIC

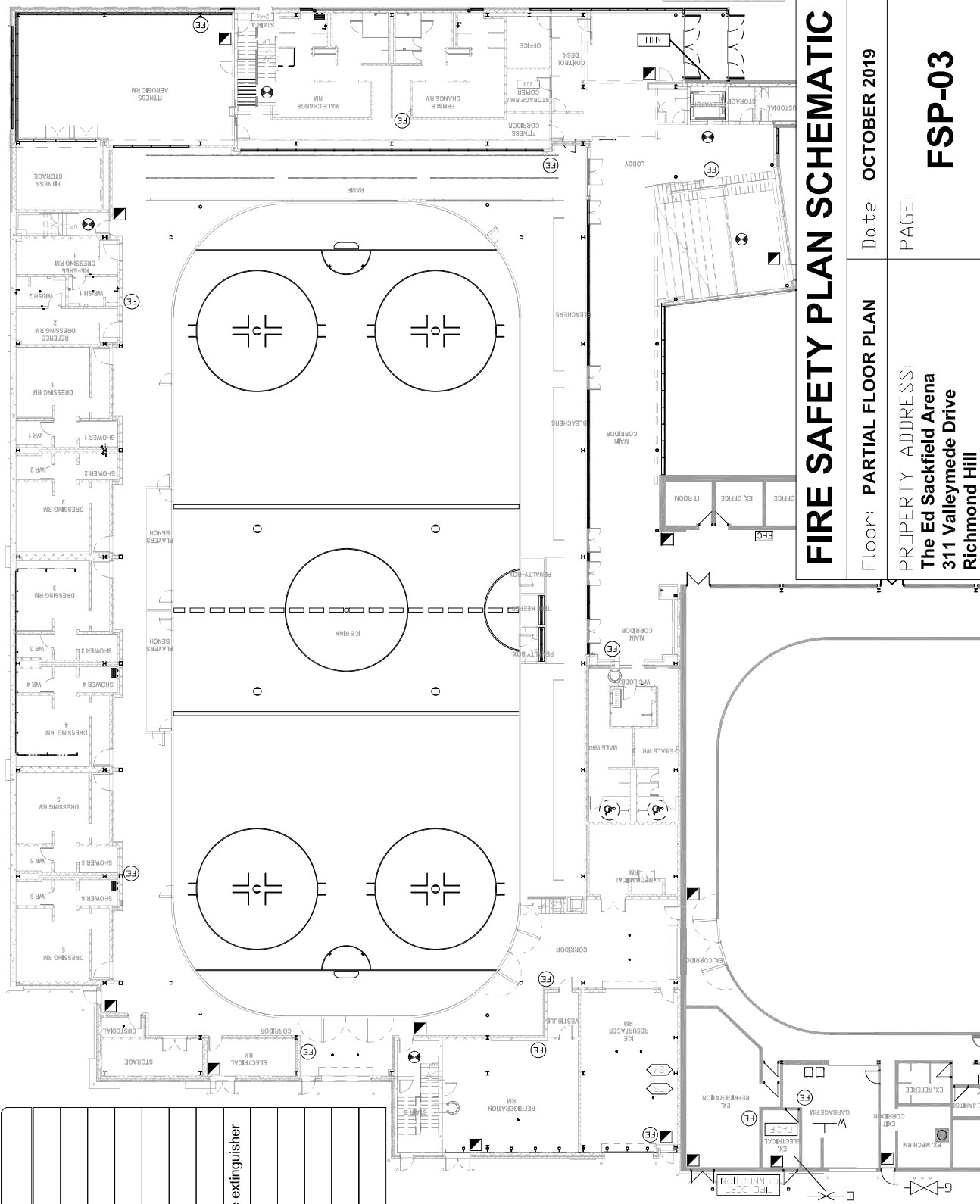
Floor: <b>SITE PLAN</b>	Date: <b>OCTOBER 2019</b>
PROPERTY ADDRESS: <b>The Ed Sackfield Arena</b> 311 Valleymede Drive Richmond Hill	PAGE: <b>FSP-01</b>

LEGEND	
	fire alarm control panel
	annunciator panel
	heat detector
	smoke detector
	manual pull station
	flow switch
	supervisory valve
	fire hose cabinet c/w fire extinguisher
	gas main shut-off
	domestic water shut-off
	electrical main shut-off
	fire hydrant
	fire extinguisher



# FIRE SAFETY PLAN SCHEMATIC

Floor: <b>PARTIAL FLOOR PLAN</b>	Date: <b>OCTOBER 2019</b>
PROPERTY ADDRESS: <b>The Ed Sackfield Arena 311 Valleymede Drive Richmond Hill</b>	PAGE: <b>FSP-02</b>



# FIRE SAFETY PLAN SCHEMATIC

Floor: **PARTIAL FLOOR PLAN**      Date: **OCTOBER 2019**  
 PROPERTY ADDRESS:  
**The Ed Sackfield Arena**  
**311 Valleymede Drive**  
**Richmond Hill**

**FSP-03**

LEGEND	
	fire alarm control panel
	annunciator panel
	heat detector
	smoke detector
	manual pull station
	flow switch
	supervisory valve
	fire hose cabinet c/w fire extinguisher
	gas main shut-off
	domestic water shut-off
	electrical main shut-off
	fire hydrant
	fire extinguisher

**KEY PLAN**

